

Simple concentration monitoring system.  
Never miss a concentration change  
with real-time readings!

**Pan**  
REFRACTOMETER

## Digital Immersion Refractometer

# PAN-1

Cat. No.3596

### Applications

- Metal-working fluids
- Water-based cleaning fluids
- Food

**Automatic  
continuous  
measurement!**

Once START is pressed,  
the unit continues to  
take measurements  
every 30 seconds.

**Rugged construction  
for reliable long-term  
performance!**

The immersed part is  
made of SUS 316  
stainless-steel.

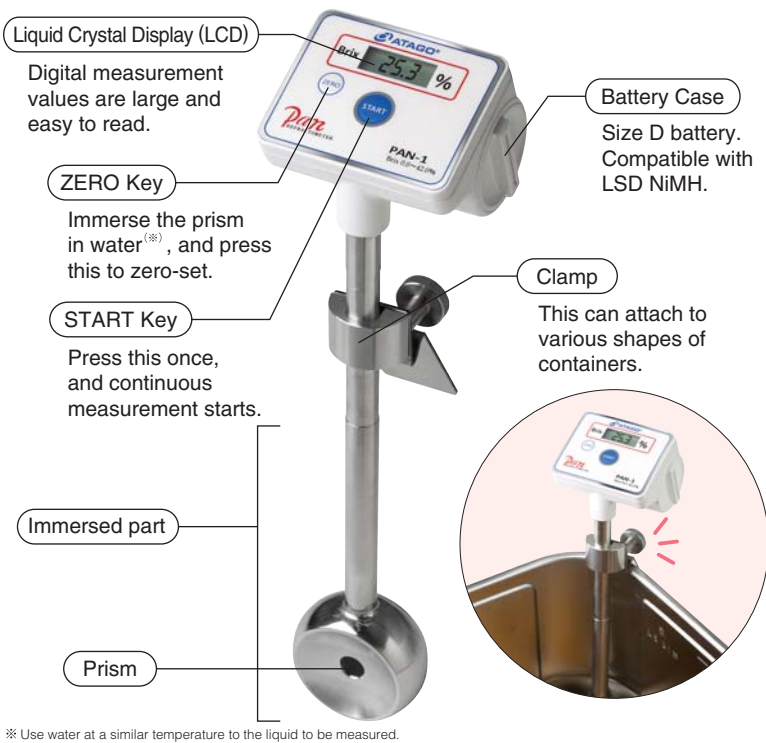


**Simply clip the  
unit on to the side of  
a container or pot!**

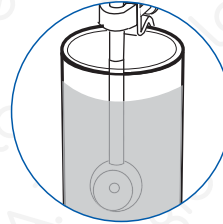
No special equipment  
is needed for the  
set-up.

**ATAGO**

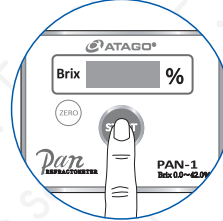
**Names and Functions of Components**



- ① Submerge the prism in the liquid.
- ③ Measurements are taken every 30 seconds.



- ② Press the START key.



Blinks three times

---

Brix 16.0

Temperature 80.0c

Brix 16.0

Readings are displayed in the order of Brix, temperature, and then Brix.

※ Brix and temperature measurements are taken every 30 seconds and displayed in the above order.

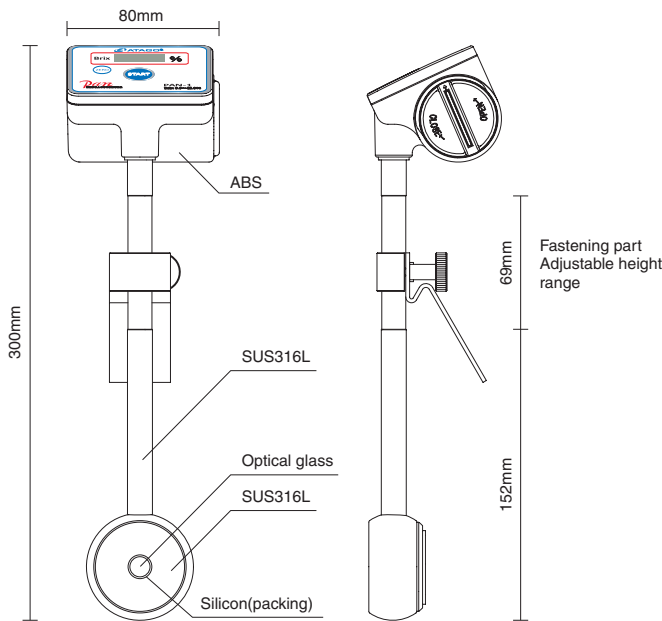
**Displayed Value**

This instrument measures the refractive index of a liquid and displays the converted value in "Brix," which is a percentage measurement of sugar in water. The concentration of a substance other than sugar can be calculated by creating a conversion table of the desired concentration % and corresponding Brix %. Contact ATAGO for further details.

**Specifications**

PAN-1		Cat. No.3596
Measurement range	Brix 0.0 to 42.0%	Temperature 10.0 to 99.9°C
Resolution	Brix 0.1% Temperature 0.1°C	
Measurement accuracy	Brix ±0.2% Temperature ±0.5°C	
Measurement temperature	10 to 95°C	
International Protection class	Immersed part IP67	Display IP65
Dimensions and weight	80(W)×300(L)×72(H)mm 610g (main unit only)	
Battery life	2 months(when an alkaline battery is used)	
Power supply	Size D alkaline battery × 1 Compatible with LSD NiMH.	
Ambient temperature	10 to 45°C	
Accessories	① Size D battery ② Instruction manual	

**Dimensions**



All ATAGO refractometers are designed and manufactured in Japan.

**HACCP GMP GLP** ATAGO products comply with HACCP, GMP, and GLP system standards.

**ATAGO CO.,LTD.**

Headquarters: The Front Tower Shiba Koen, 23rd Floor  
2-6-3 Shiba-koen, Minato-ku, Tokyo 105-0011, Japan  
TEL : 81-3-3431-1943 FAX : 81-3-3431-1945  
overseas@atago.net http://www.atago.net/

**ATAGO U.S.A.,Inc.**

TEL : 1-425-637-2107 customerservice@atago-usa.com

**ATAGO INDIA Instruments Pvt.Ltd.**

TEL : 91-22-2833-8038 / 8076 customerservice@atago-india.com

**ATAGO (THAILAND) Co.,Ltd.**

TEL : 662-982-8718-9 customerservice@atago-thailand.com

**ATAGO BRASIL Ltda.**

TEL : 55 16 3916-6000 customerservice@atago-brasil.com

**ATAGO ITALIA s.r.l.**

TEL : 39 2 36557267 customerservice@atago-italia.com

**ATAGO CHINA Guangzhou Co.,Ltd.**

TEL : 86 20-38106065 info@atago-china.com



\* Specifications and appearance are subject to change without notice.



CORSO NINO BIXIO, 16  
12051 ALBA (CN)  
TEL. 0173 290898 - 366669  
FAX 0173 365277  
www.fiatalba.it  
E-MAIL: info@fiatalba.it  
C.FISC. e PIVA 02713460042  
CCIAA 33986/1999