

REFRACTOMETERS

For WINE



- Grape growers
- Wine cooperatives (sorting grape must)
- Wineries (purchasing grape must)
- Buyers for grape must

Refractometers can effectively estimate the alcohol content in finished wine.

Refractometers are used to measure the sugar content of grape must before fermentation. During fermentation, sugars in grape must are converted into alcohol. Pre-fermentation Brix readings are a reliable indicator for winemakers worldwide, there are other scales for measuring grape must. The WM-7 Digital Wine Refractometer is equipped with 7 scales to satisfy the need of end-users in different countries and regions to meet various standards.

Digital Wine Refractometer

WM-7

Cat.No.3415



7 Scales

Digital Hand-held "Pocket" Wine Refractometer



PAL-84S

Dual Scale

PAL-79S Cat.No.4479

PAL-80S Cat.No.4480

PAL-83S Cat.No.4483

PAL-84S Cat.No.4484

PAL-86S Cat.No.4486

PAL-87S Cat.No.4487

Scales	Measurement range	Minimum indication	Measurement accuracy
[1] Brix (determined by ICUMSA)	0.0 to 45.0%	0.1%	±0.1%
[2] T.A. 1990 (Titre Alcometrique established in 1990)	0.0 to 26.0%	0.1%	±0.2%
[3] T.A. 1971 (Titre Alcometrique established in 1971)	0.0 to 25.0%	0.1%	±0.2%
[4] Oe (GER) (Oechsle used in Germany)	0 to 240°	1°	± 1°
[5] Oe (Oechsle)	0 to 240°	1°	± 1°
[6] KMW (or Babo)	0.0 to 40.0°	0.1°	±0.2°
[7] Baume	0.0 to 21.0°	0.1°	±0.2°
Measurement temperature	5 to 40°C (ATC)		
Ambient temperature	5 to 40°C		
Measurement time	3 seconds		
Power supply	006P Dry battery (9V)		
International protection class	IP64 Water resistant		
Dimensions and weight	17x9x4cm, 300g (main unit only)		

Model	Cat.No.	Scale	Measurement range	Minimum indication	Measurement accuracy
PAL-79S	4479	T.A. 1990	0.0 to 26.0%	0.1%	±0.2%
PAL-80S	4480	T.A. 1971	0.0 to 25.0%	0.1%	±0.2%
PAL-83S	4483	KMW (or Babo)	0.0 to 40.0°	0.1°	±0.2°
PAL-84S	4484	Baume	0.0 to 21.0°	0.1°	±0.2°
PAL-86S	4486	Oe (GER) (Dual Scale)	0 to 240° Brix	1°	±1°
PAL-87S	4487	Oe (Oechsle) (Dual Scale)	0 to 240° Brix	1°	±1°

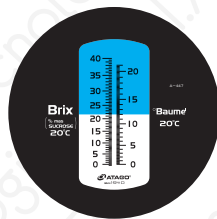
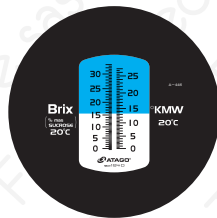
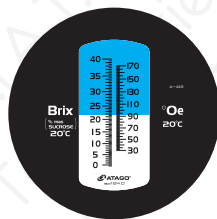
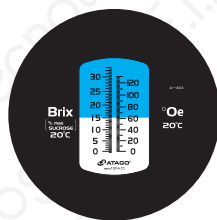
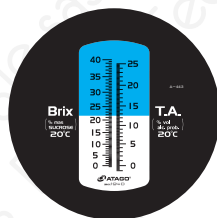
Measurement temperature	10 to 40°C (ATC)
Ambient temperature	10 to 40°C
Measurement time	3 seconds
Power supply	2xAAA Batteries
International protection class	IP65 Water resistant
Dimensions and weight	5.5x3.1x10.9cm, 100g (main unit only)

REFRACTOMETERS For WINE



ATC & Water Resistant Wine Refractometer

MASTER-TA	Cat.No.2590
MASTER-OE	Cat.No.2591
MASTER-GOE	Cat.No.2592
MASTER-KMW	Cat.No.2593
MASTER-BAUME	Cat.No.2594



Material: Metal

Wine Refractometer

MASTER-P/TA	Cat.No.2600
MASTER-P/OE	Cat.No.2601
MASTER-P/GOE	Cat.No.2602
MASTER-P/KMW	Cat.No.2603
MASTER-P/BAUME	Cat.No.2604



Material: Plastic

Scale	Model	
T.A.1990 / Brix	MASTER-TA	MASTER-P/TA
Oe (Oechsle) / Brix	MASTER-OE	MASTER-P/OE
Oe (GER) / Brix	MASTER-GOE	MASTER-P/GOE
KMW (or Babo) / Brix	MASTER-KMW	MASTER-P/KMW
Baume / Brix	MASTER-BAUME	MASTER-P/BAUME

MASTER-TA	Model	MASTER-P/TA
2590	Cat.No.	2600
T.A. 0.0 to 25.0 % Brix 0.0 to 40.0 % (ATC)	Scale range	T.A. 0.0 to 25.0 % Brix 0.0 to 40.0 %
T.A. 0.2 % Brix 0.5 %	Minimum Scale	T.A. 0.2 % Brix 0.5 %
T.A. ±0.3 % Brix ± 0.5 % (10 to 30°C)	Accuracy	T.A. ±0.3 % Brix ± 0.5 %
3.2x3.4x16.8cm, 130g	Size and weight	3.2x3.4x16.8cm, 90g
MASTER-OE	Model	MASTER-P/OE
2591	Cat.No.	2601
Oe 0.0 to 130° Brix 0.0 to 33.0 % (ATC)	Scale range	Oe 0.0 to 130° Brix 0.0 to 33.0 %
Oechsle 2° Brix 0.5 %	Minimum Scale	Oechsle 2° Brix 0.5 %
Oechsle ±2° Brix ±0.5 % (10 to 30°C)	Accuracy	Oechsle ±2° Brix ±0.5 %
3.2x3.4x16.8cm, 130g	Size and weight	3.2x3.4x16.8cm, 90g
MASTER-GOE	Model	MASTER-P/GOE
2592	Cat.No.	2602
German Oechsle 30 to 170° Brix 0.0 to 40.0 % (ATC)	Scale range	German Oechsle 30 to 170° Brix 0.0 to 40.0 %
German Oechsle 1° Brix 0.5%	Minimum Scale	German Oechsle 1° Brix 0.5%
German Oechsle ±2° Brix ±0.5 % (10 to 30°C)	Accuracy	German Oechsle ±2° Brix ±0.5 %
3.2x3.4x16.8cm, 130g	Size and weight	3.2x3.4x16.8cm, 90g
MASTER-KMW	Model	MASTER-P/KMW
2593	Cat.No.	2603
KMW 0.0 to 27.0° Brix 0.0 to 33.0 % (ATC)	Scale range	KMW 0.0 to 27.0° Brix 0.0 to 33.0 %
KMW 0.5° Brix 0.5 %	Minimum Scale	KMW 0.5° Brix 0.5 %
KMW ±0.5° Brix ±0.5 % (10 to 30°C)	Accuracy	KMW ±0.5° Brix ±0.5 %
3.2x3.4x16.8cm, 130g	Size and weight	3.2x3.4x16.8cm, 90g
MASTER-BAUME	Model	MASTER-P/BAUME
2594	Cat.No.	2604
Baume 0.0 to 21.0° Brix 0.0 to 40.0% (ATC)	Scale range	Baume 0.0 to 21.0° Brix 0.0 to 40.0%
Baume 0.2° Brix 0.5%	Minimum Scale	Baume 0.2° Brix 0.5%
Baume 0.3° Brix ±0.5 % (10 to 30°C)	Accuracy	Baume 0.3° Brix ±0.5 %
3.2x3.4x16.8cm, 130g	Size and weight	3.2x3.4x16.8cm, 90g

All ATAGO products are designed and manufactured in Japan.

ATAGO CO., LTD.

<http://www.atago.net/> overseas@atago.net

- ATAGO U.S.A., Inc.**
- ATAGO INDIA Instruments Pvt.Ltd.**
- ATAGO THAILAND Co.,Ltd.**
- ATAGO BRASIL Ltda.**
- ATAGO ITALIA s.r.l.**
- ATAGO CHINA Guangzhou Co.,Ltd.**
- ATAGO RUSSIA Ltd.**
- ATAGO NIGERIA Scientific Co.,Ltd.**

- Headquarters: The Front Tower Shiba Koen, 23rd Floor
2-6-3 Shiba-koen, Minato-ku, Tokyo 105-0011, Japan
TEL : 81-3-3431-1943 FAX : 81-3-3431-1945
- customer-service@atago-usa.com
- customer-service@atago-india.com
- customer-service@atago-thailand.com
- customer-service@atago-brasil.com
- customer-service@atago-italia.com
- info@atago-china.com
- info@atago-russia.com
- atagonigeria@atago.net



HACCP GMP GLP

ATAGO products comply with HACCP, GMP, and GLP system standards.

FIAT TECNOLOGIE sas
 CORSO NINO BIXIO, 16
 12051 ALBA (CN)
 TEL. 0173 290898 - 366669
 FAX 0173 365277
 www.fiatatago.it
 E-MAIL: info@fiatba.it
 C.FISC. e P.IVA 0271346042
 C.C.I.A.A. 33986/1999

* Specifications and appearance are subject to change without notice.